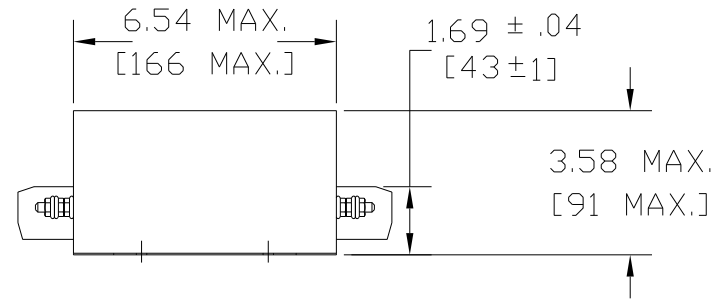
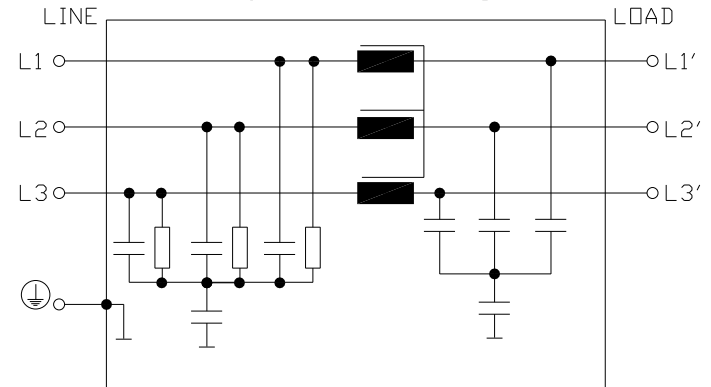


Tightening Torque 3 ± 0.15 Nm



Typical Circuit Diagram.



Technical data and measuring conditions.

Rated Voltage V_R	760/440 V AC, 50/60Hz.
Rated Current I_R	Referred to 40 °C ambient temperature
Test Voltage V_{test}	3270 V DC, 2 s (line/line) 3000 V DC, 2 s (line/case)
Overload Capability (thermal)	1.5 · I_R for 3 min per hour or 2.5 · I_R for 30 s per hour
Leakage Current I_{leak}	At 690 V AC, 50 Hz.
Climatic Category (IEC 60068-1)	25/100/21 (-25 °C/+100 °C/21 days damp heat test)
Approvals	EN 60939, UL 1283, CSA C22.2 No. 8

V_R AC V	I_R A	Terminal cross section mm ²	I_{leak} mA	$R_{typ.}$ m ohm	Approx. Weight kg. / lbs.
760/440	36	10	< 7	3.8	4 / 8.8

				TOLERANCES (EXCEPT AS NOTED)		7878 N. 86th STREET MILWAUKEE, WI 53224		
				DECIMAL				
				XX ±.02		KRF FILTER KRF0036VTB, 600-690V, 36A		
				XXX±.01				
				FRACTIONAL ± 1/32				
A UPDATE APPROVALS				6/13/11	DSW	DRN. BY	DATE	DWG. NO.
NO REVISION				DATE	BY	DSW	1/07/2010	KRF0036VTB
				ANGULAR ± 1/2°		SCALE		TO FIT
						APRVD		SHT. 1 OF 1